



# Criterion-4: Infrastructure and Learning Resources

Key Indicator – 4.3: IT Infrastructure

**Metric: 4.3.3**

**Facilities and their Geo-tagged Photographs**

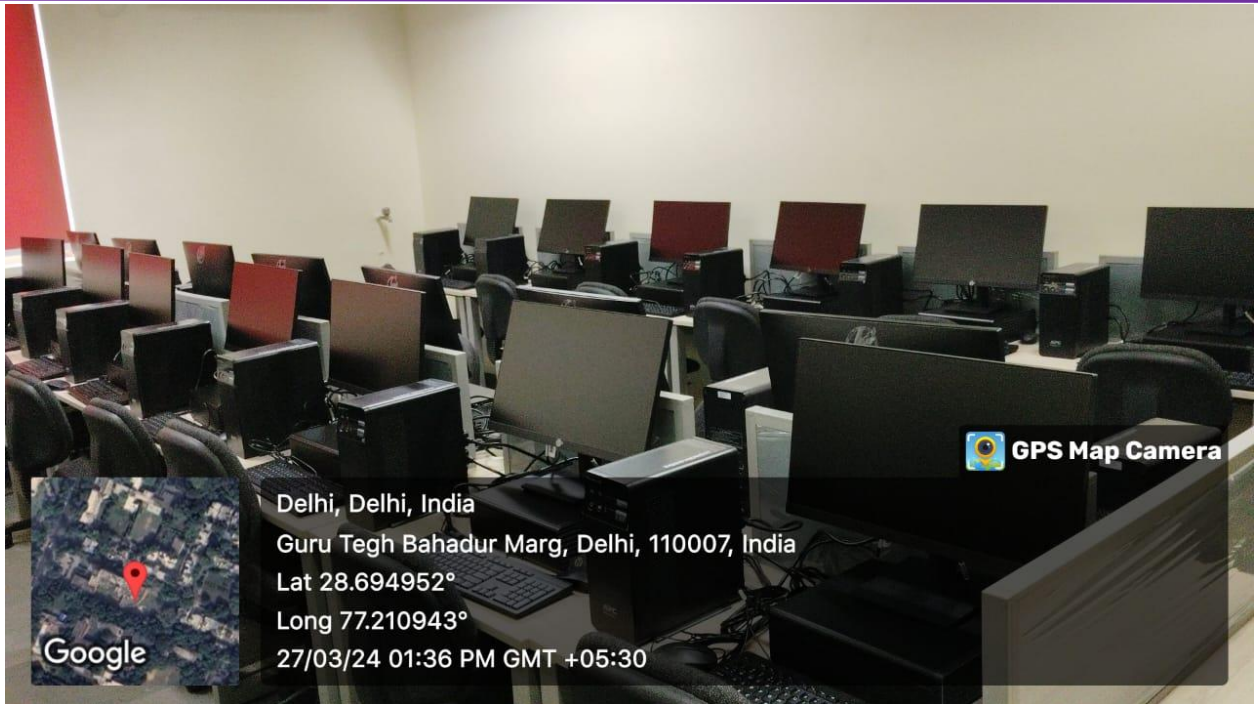


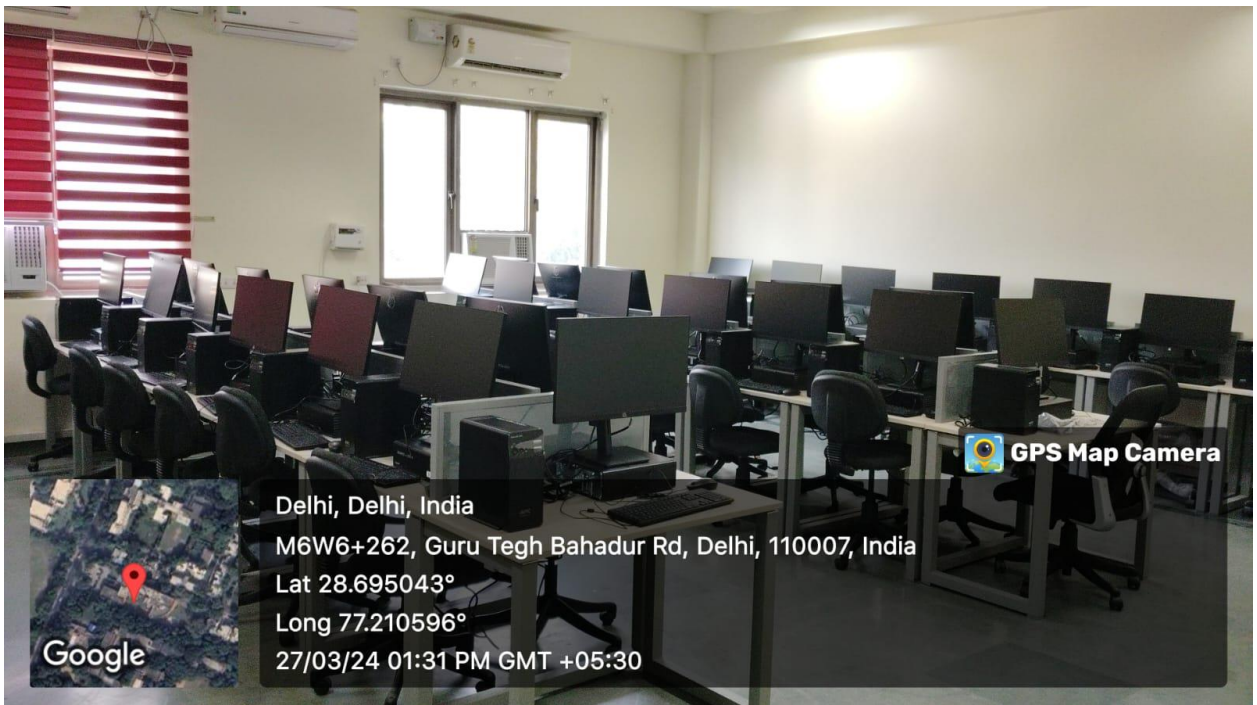
## Audio Visual Center, Mixing Equipment, Editing Facilities and Media Studio

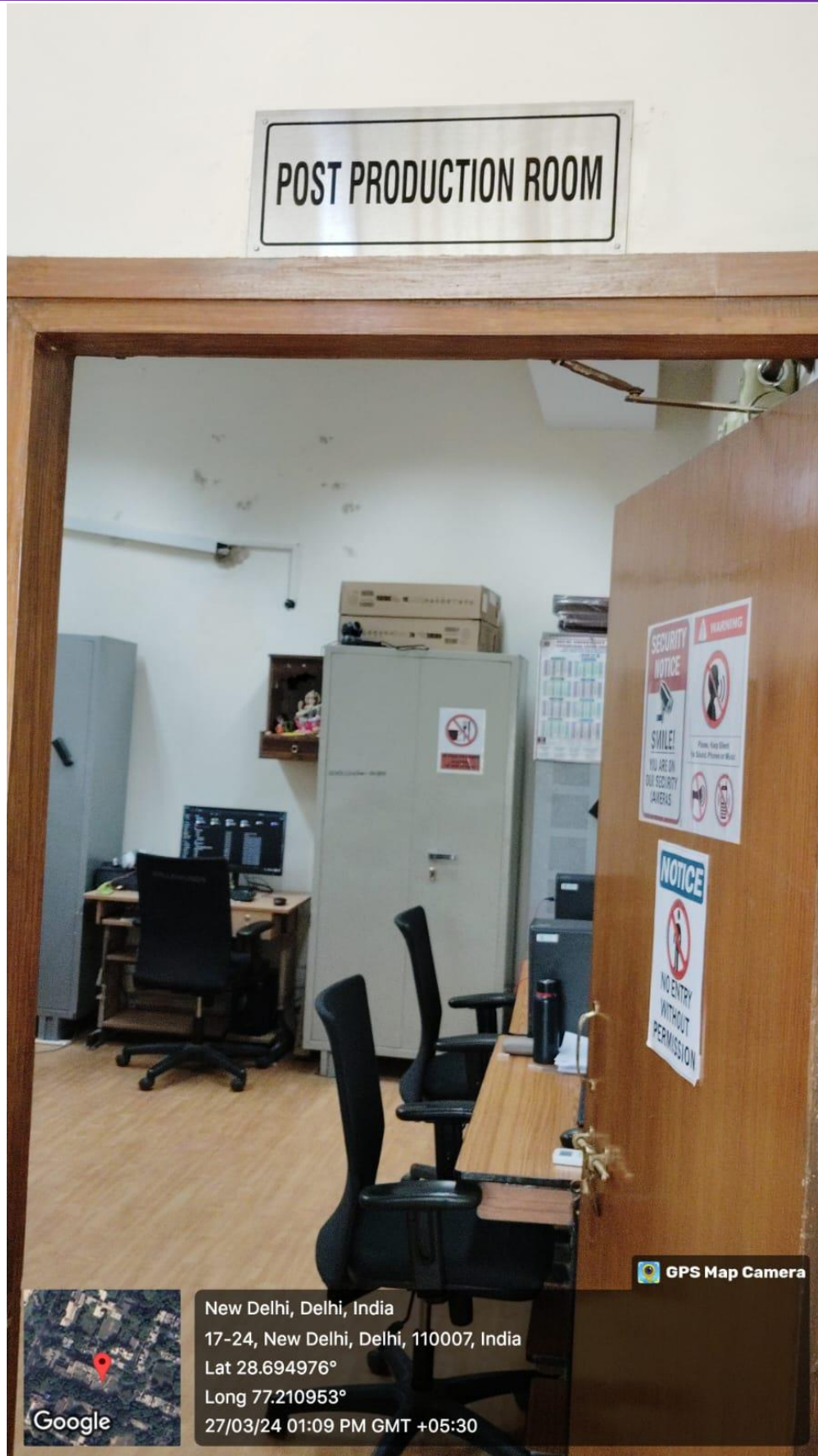
The Audio-Visual Center offers state-of-the-art equipment and expert support for students, faculty, and staff. From high-definition projectors to professional recording gear. The Mixing Equipment facility offers industry-standard tools for audio projects, supported by knowledgeable staff. The Editing Facilities provide high-performance workstations and guidance for multimedia production.

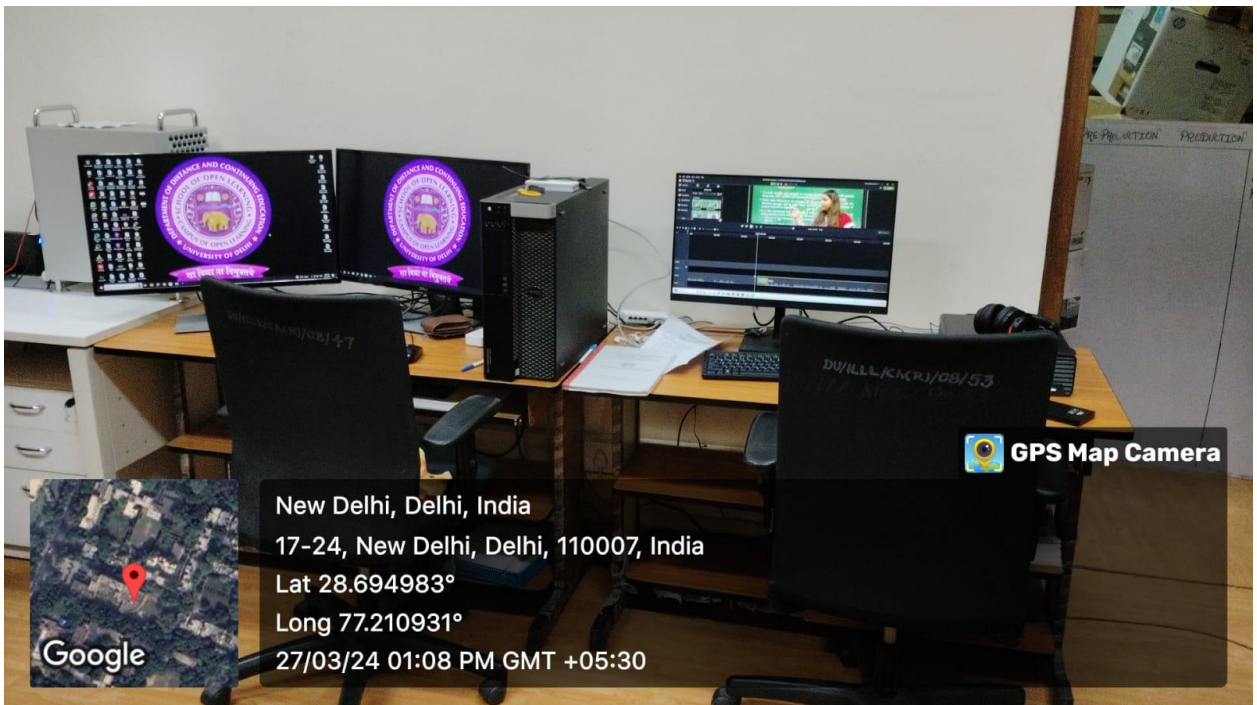
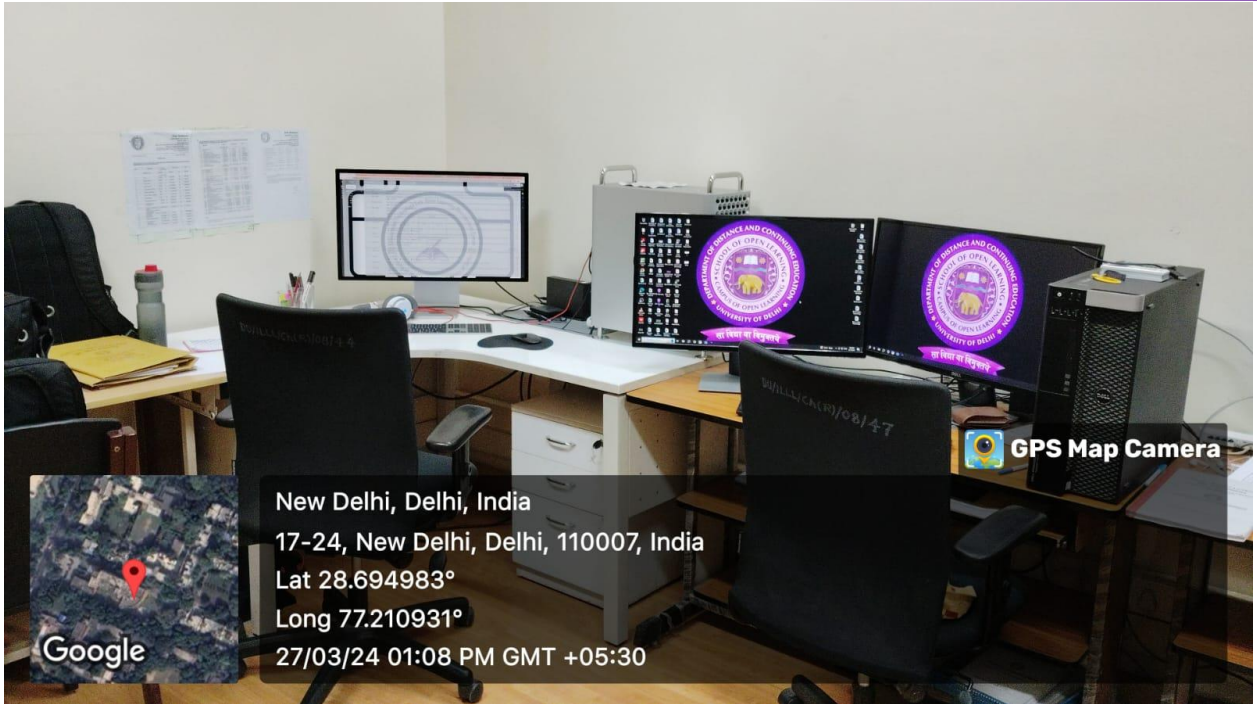
<https://web.sol.du.ac.in/home>









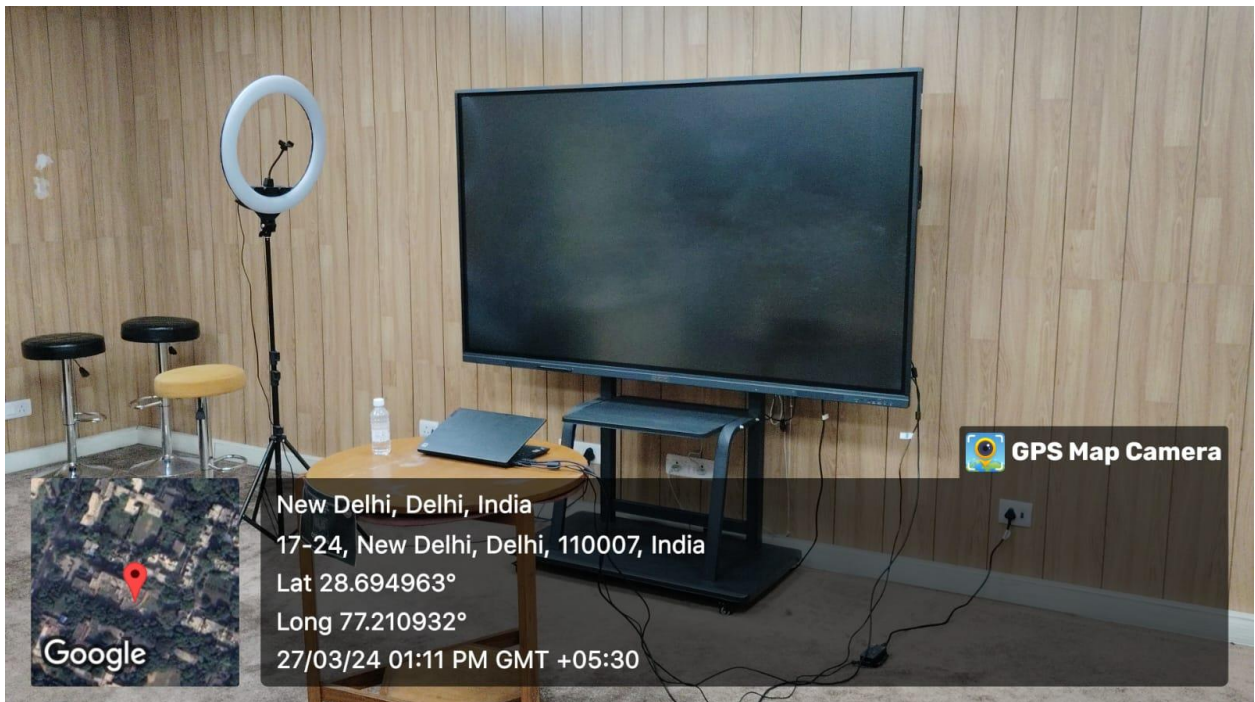




## Lecture Capturing System

It records lectures with HD quality, providing students access anytime. Flexible online platforms support diverse learning styles.

<https://web.sol.du.ac.in/home>





## Central Instrumentation Centre

Three centralized research hubs are part of the University of Delhi: the University Science Instrumentation Centre (USIC) in the North Campus, the Central Instrumentation Facility (CIF) in the South Campus and the third in the Institution of Eminence (IoE) Centre,. These facilities provide state-of-the-art tools and support services to academic users, both internal and external, across a range of fields, such as imaging, proteomics, genomics, and more.

<https://www.usic.du.ac.in/>



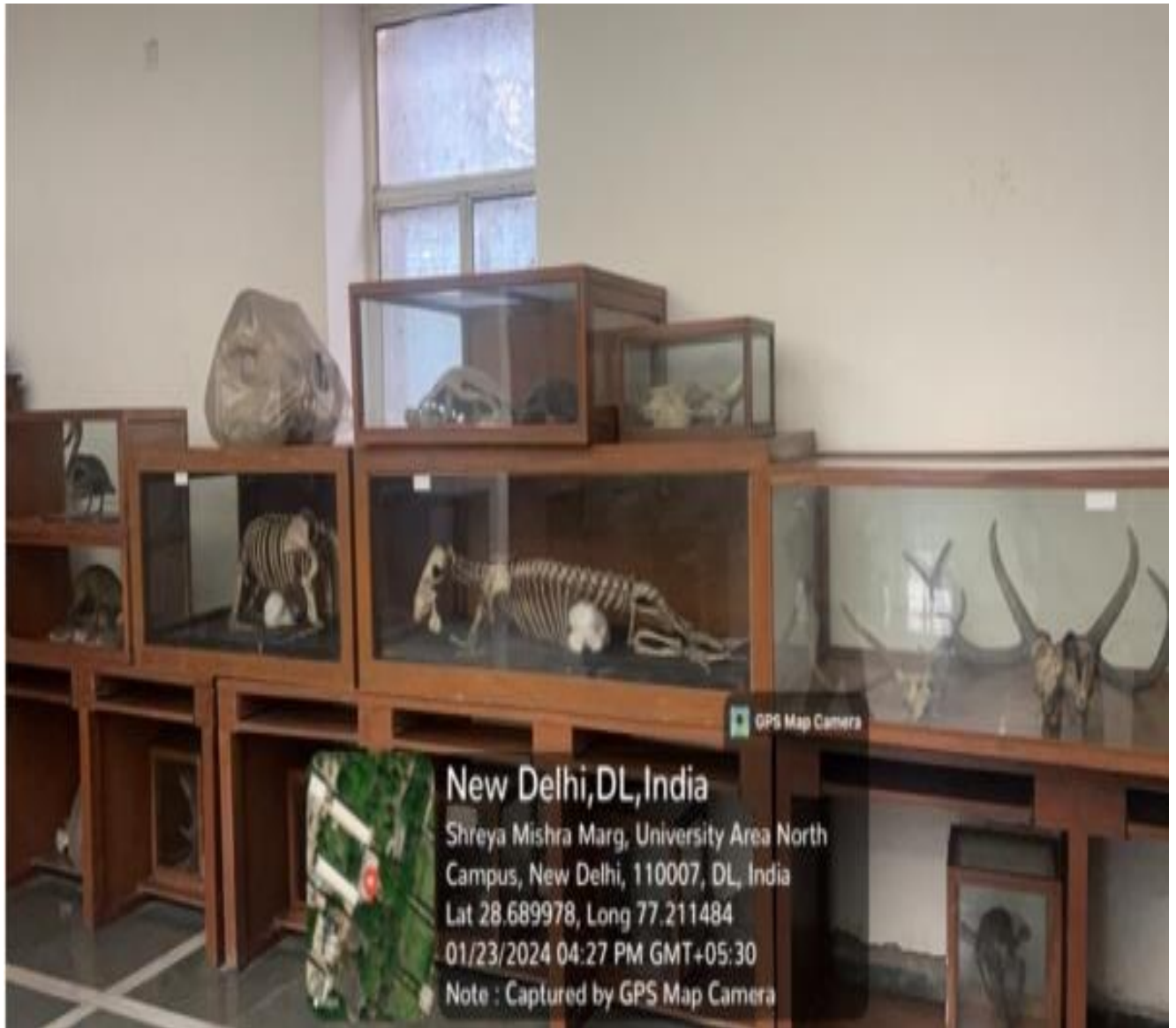




## Animal House

The department houses a four-floor animal facility dedicated to research and transgenic animals, equipped with its own autoclave unit and cage wash facility.

<https://zoology.du.ac.in/Facilities.php#1>

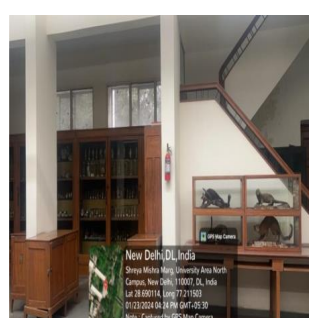
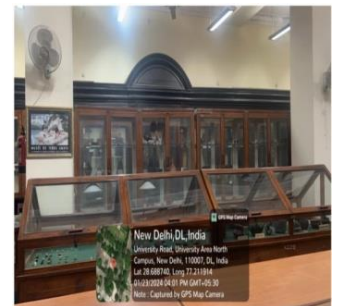




## Museum (Department of Anthropology)

The Museum at the Department of Anthropology holds a significant role in teaching various branches of anthropology. The museum houses cast of fossil man, stuffed great apes, and primate bones for research in physical anthropology.

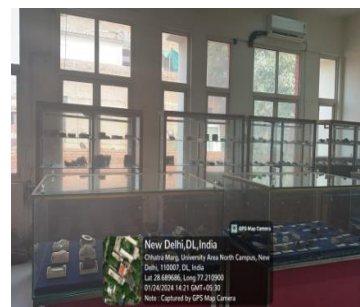
<https://anthro.du.ac.in/museum.html>





## Museum (Department of Geology)

The museum is enriched by faculty members contributing to the geological museum collection of rocks, minerals, and fossils. Divided into two sections, the museum features exhibits ranging from dinosaur models and eggs to ammonites and a fossilized plant, providing comprehensive insights into geology and evolutionary history.



<https://www.du.ac.in/index.php?page=department-of-geology>

## Museum (Department of Music)

The museum showcases a remarkable collection of musical instruments used in Indian Classical Music, spanning both Hindustani and Karnatak traditions. Rare instruments, including the Tanjauri Veena, Rudra Veena, and Sitar, among others, are on display, attracting research scholars, music enthusiasts, and departmental students.

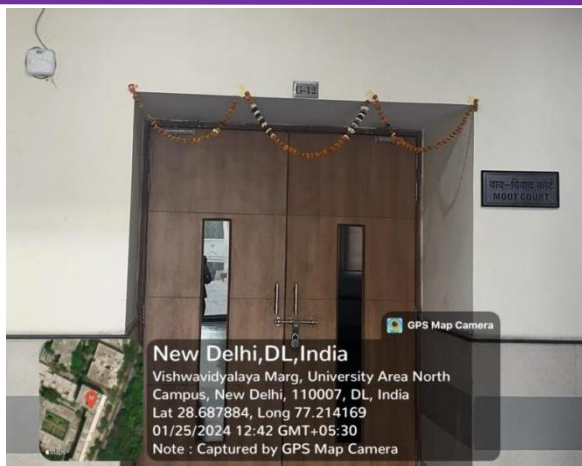
## Research/Statistical database

The number of e-books acquired, databases subscribed and databases accessible from E-Sodh Sindhu during 2018-19 to 2022-23 is presented in following table

Category	2018-19	2019-20	2020-21	2021-22	2022-23	Total
E-Books	Nil	Nil	962	2,424	84,418	87,804
Subscribed Databases	26	30	35	35	37	
ESS Databases	13	13	13	13	13	

## Moot Court

The Moot Court provides a dedicated space for students to develop advocacy and dispute resolution skills through training programs, workshops, and internal moot court competitions. With seating for over 300 students, it hosts prestigious events like the K.K. Luthra Memorial Moot Court Competition, attracting practicing lawyers and emphasizing excellence in legal advocacy.



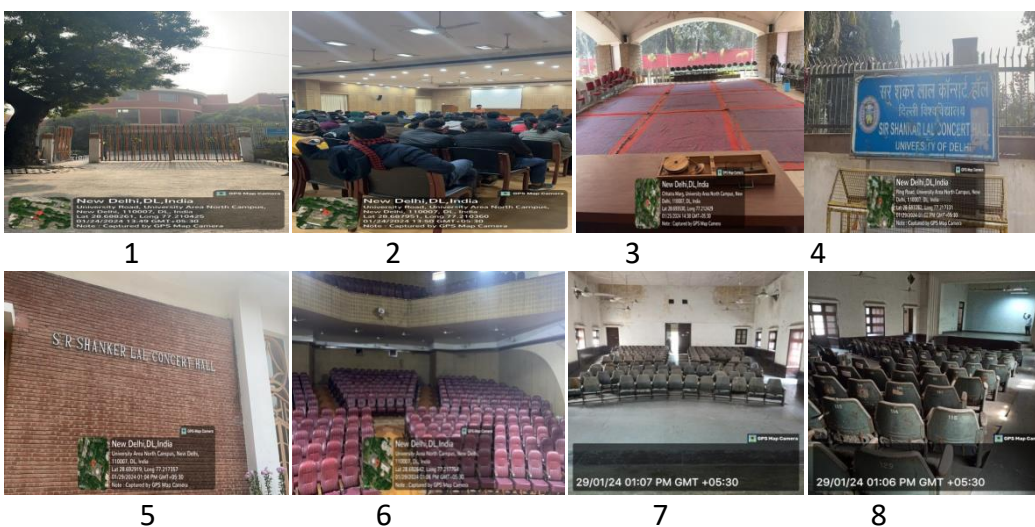
<https://clc.du.ac.in/committees/moot-court-society/>

## Theatre

The University of Delhi has following spaces that are used for the purpose of theatre:

S. No.	Convention Hall	Address	Seating Capacity (person)
1)	Conference Centre	North Campus (Near Gate No.4)	250-300
2)	Satyakam Bhawan	Social Science	300-350
3)	Shankar Lal Concert Hall	Music Faculty	400-500
4)	ILLL Auditorium	ARC Building	250
5)	Tagore Hall	Arts Faculty Building	300
6)	Other Open Space Area	Arts Faculty/Social Science Department	

(Conference center 1, 2, Gandhi Bhawan 3, Sir Shankar Lal Concert Hall 4, 5, 6, Tagore Hall 7, 8, Satyakam Bhawan 9, 10)





9



10

<https://www.du.ac.in/index.php?page=Conference-Centre>

<https://www.du.ac.in/index.php?page=Gandhi-Bhawan>

### Any other facility to support research

The University of Delhi has several other research related infrastructure such as Agricultural Economics Research Centre, Centre for Detector & Related Software Technology, Centre for Environmental Management of Degraded Ecosystems (CEMDE), Centre for Himalayan, Cluster Innovation Centre etc. Science departments have their own central instrumentation facilities.

